

Customer: \_\_\_\_\_

PO #: \_\_\_\_\_

Job Name: \_\_\_\_\_

Quote#: \_\_\_\_\_

Date: \_\_\_\_\_

Quantity: \_\_\_\_\_

Ship To: \_\_\_\_\_

\_\_\_\_\_

\_\_\_\_\_

\_\_\_\_\_

\_\_\_\_\_

Notes: \_\_\_\_\_

\_\_\_\_\_

\_\_\_\_\_

\_\_\_\_\_

\_\_\_\_\_

\_\_\_\_\_

## Standard Features

- Three-piece unit
- AcrylX™ applied acrylic
- Slip-resistant floor

Interior Dimensions: 56" W x 31" D x 79" H

Exterior Dimensions: 59 ¾" W x 32" D x 80 ½" H

Skirt Height: 14 ½"

Weight: 200 lbs

Wall Finish: Smooth

Drain Location: End (Left or Right)

Material: AcrylX™

## CONFIGURATION (handed by seat)

☐ Fully Configured – ADA\*    Drain Location: ☐ Left-Handed Drain ☐ Right-Handed Drain

**Includes:** Symmons® pressure balance mixing valve with concealed check stops; Moen® hand held shower head with hose and stainless steel slide bar/grab bar; tension rod; two 18" stainless steel grab bars; two 24" stainless steel grab bars; one 22" stainless steel grab bar; one bathtub folding seat; molded-in corner soap dish

## CUSTOM OPTIONS (Not Available if Fully Configured Option is selected)

**Seat:** ☐ Left-Handed Phenolic Seat    ☐ Right-Handed Phenolic Seat

Straight Grab Bars (All Grab Bars are Stainless Steel unless otherwise noted):

12"(left side wall) – QTY: \_\_\_\_\_    12"(right side wall) – QTY: \_\_\_\_\_    16" – QTY: \_\_\_\_\_    18" – QTY: \_\_\_\_\_

Location: \_\_\_\_\_    Location: \_\_\_\_\_    Location: \_\_\_\_\_

22" – QTY: \_\_\_\_\_    24" – QTY: \_\_\_\_\_    26" – QTY: \_\_\_\_\_

Location: \_\_\_\_\_    Location: \_\_\_\_\_    Location: \_\_\_\_\_

Fixture Wall: ☐ Left ☐ Right ☐ Back

☐ Hand-held shower assembly with 30" slide bar and 60" hose

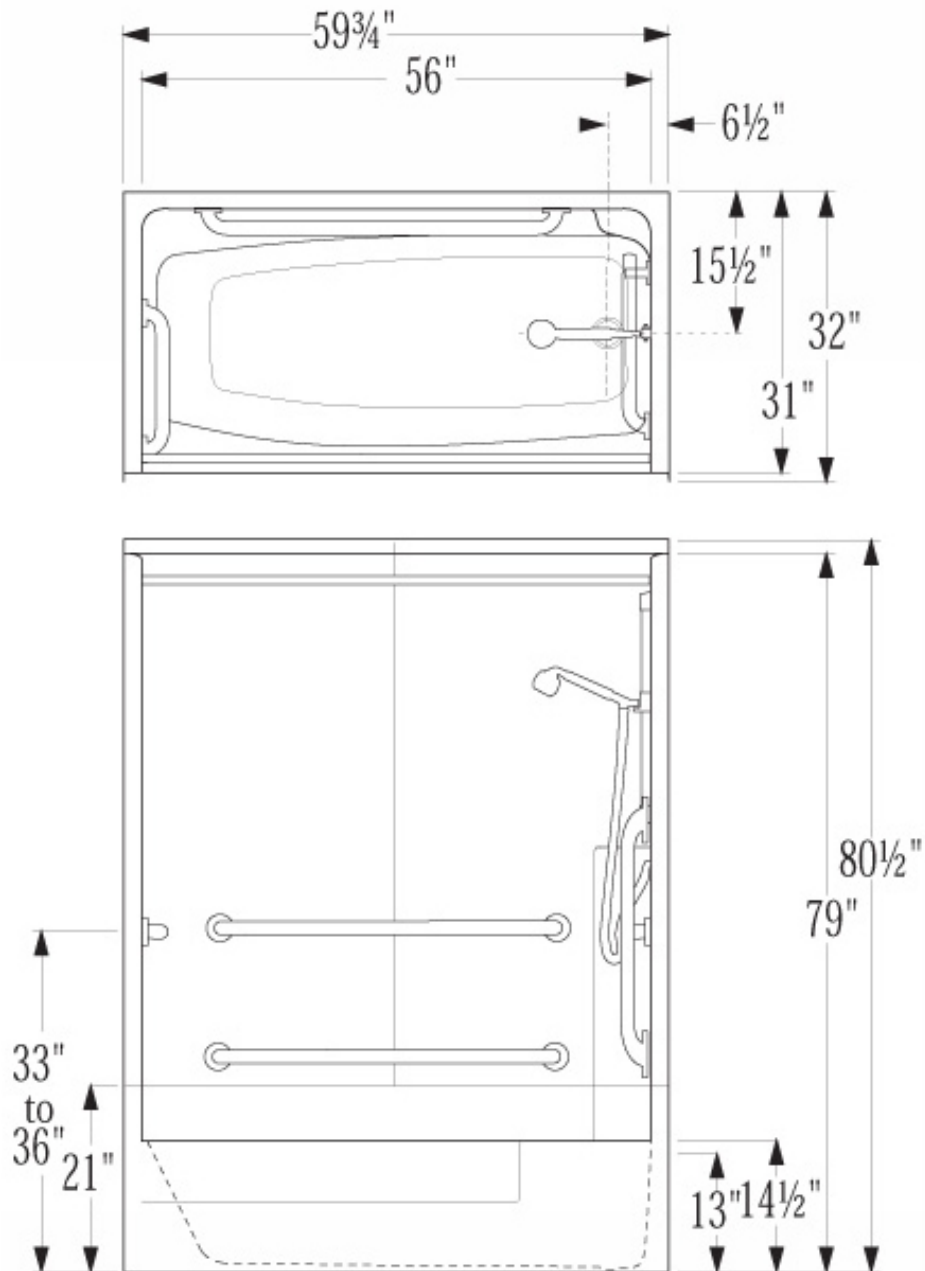
☐ Pressure balancing mixing valve

## OPTIONAL ACCESSORIES

☐ Shower Curtain    ☐ Curtain Rod    ☐ 2" Drain    ☐ Collapsible Water Dam



ANY ALTERATIONS TO ACCESSORIES SHOWN BELOW, PLEASE NOTE ON THESE DRAWINGS.



Plumbing Contractor Approval: \_\_\_\_\_ Date: \_\_\_\_\_

General Contractor Approval: \_\_\_\_\_ Date: \_\_\_\_\_

Engineer Approval: \_\_\_\_\_ Date: \_\_\_\_\_

Architect Approval: \_\_\_\_\_ Date: \_\_\_\_\_