

60-31HTS Tile Back

inches

TUB/SHOWERS

59 ¾ W x 32 D x 80 ½ H



FEATURES

- One piece tub shower with small square tile pattern
- Made with durable AcrylX® applied acrylic
- Unit includes the following accessories:
 - Stainless steel curtain rod
 - Symmons® pressure balance mixing valve with concealed check stops
 - Moen® hand-held shower head with hose and chrome-plated slide bar
 - Straight stainless steel grab bars: two 18" bars, two 24" bars, one 22" bar
 - Folding seat

OPTIONS

- Shower curtain

CODE COMPLIANCE

- ANSI-Z-124.2
- ADA
- California ADA

COLOR OPTIONS

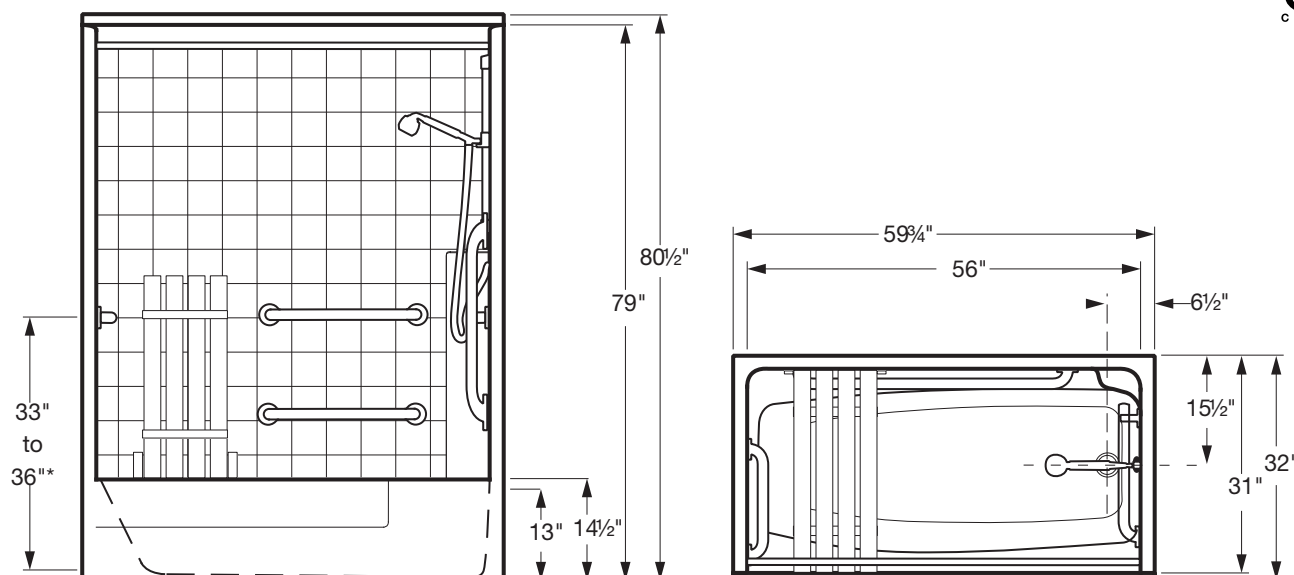
Standard Color	Code
White	WT
Optional Colors	
Colors matching most major manufacturers' colors are available.	

FLORESTONE
A spec above.



60-31HTS Tile Back

59 $\frac{3}{4}$ W x 32 D x 80 $\frac{1}{2}$ H
inches



FEATURES Dimensional Tolerance $\pm \frac{1}{4}$ ". Dimensions needed for site preparation should be measured from the unit. American Bath Group assumes no responsibility for preparatory work.

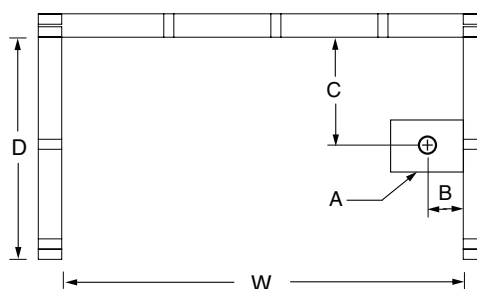
Model #	Material	Wall Finish	Drain	Net Wt.
Tub-Shower #60-31HTS Tile Back	AcrylX™	Square Tile Pattern	LH or RH	200

DIMENSIONS

Specifications	inches
Width: Ext. / Int.	59 $\frac{3}{4}$ / 56
Depth: Ext. / Int.	32 / 31
Height: Ext. / Int.	80 $\frac{1}{2}$ / 79
Enclosure Opening	56
Skirt Height	14 $\frac{1}{2}$
Drain Rough-In (from Back Wall)	15 $\frac{1}{2}$
Drain Rough-In (from Side Wall)	6 $\frac{1}{2}$
Drain: Diameter / Clearance	2 / $\frac{3}{4}$

FRAMING DIMENSIONS inches

Type	D Depth	W Width	H Height	A	B	C
Alcove	32 $\frac{1}{4}$	60	—	Box Out	6 $\frac{1}{2}$	15 $\frac{1}{2}$



Rev. 09.15.24

