

SHOWER

Interior Dimensions: 60" W x 37" D x 76" H

Exterior Dimensions: 62" W x 39" D x 77" H



COLOR OPTIONS

| Standard Color | Code |
|----------------|------|
| White | WT |

FEATURES

- One-piece shower
- Barrier-free when properly installed
- Made with durable AcrylX™ applied acrylic
- Supplied with a 2" brass drain
- Available with the following accessories:
 - Stainless steel curtain rod
 - Symmons® pressure balance mixing valve with concealed check stops
 - Moen® hand-held shower head with hose and chrome-plated slide bar
 - Stainless steel corner grab bar
 - Stainless steel recessed soap dish
 - White naugahyde transfer seat
 - Collapsible water dam

CODE COMPLIANCE

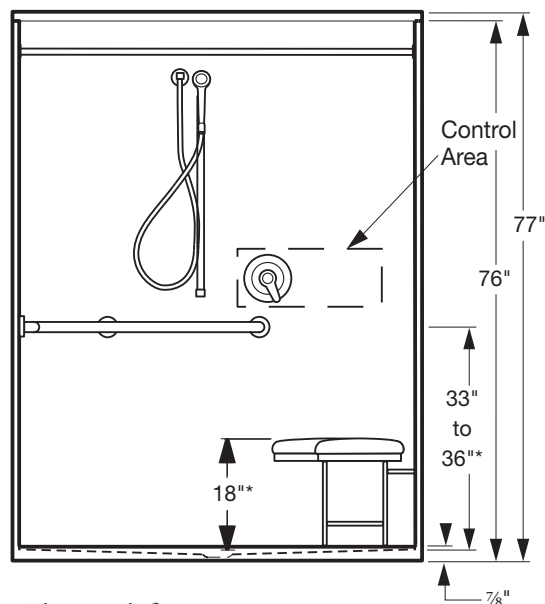
- IAPMO
- ADA Code Compliant

Note: Local ANSI compliance and code may vary from the ADA code compliance on existing Florestone units. If you would like a different placement of grab bars or valves other than stated on the Spec Sheets of each unit, please make a note on your PO on the specific dimension placement you would like the accessories attached. Please contact Florestone Inside Sales for clarification or assistance.

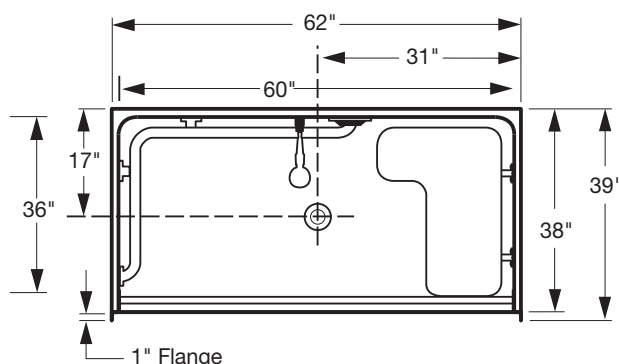
40-62H

Interior Dimensions: 60" W x 37" D x 76" H

Exterior Dimensions: 62" W x 39" D x 77" H



*Above inside floor



FEATURES Dimensional Tolerance $\pm \frac{1}{4}$ ". Dimensions needed for site preparation should be measured from the unit. American Bath Group assumes no responsibility for preparatory work.

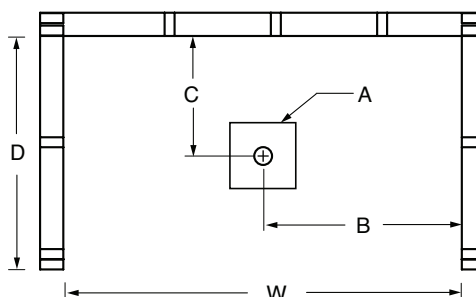
| Model # | Material | Wall Finish | Drain | Net Wt. |
|----------------|----------|-------------|--------|---------|
| Shower #40-62H | AcrylX™ | Smooth | Center | 310 |

DIMENSIONS

| Specifications | inches |
|---------------------------------|---------------|
| Width: Ext. / Int. | 62 / 60 |
| Depth: Ext. / Int. | 39 / 38 |
| Height: Ext. / Int. | 77 / 76 |
| Enclosure Opening | 60 |
| Threshold Height | $\frac{7}{8}$ |
| Drain Rough-In (from Back Wall) | 17 |
| Drain Rough-In (from Side Wall) | 31 |
| Drain: Diameter / Clearance | 2 |

FRAMING DIMENSIONS inches

| Type | D Depth | W Width | H Height | A | B | C |
|--------|------------------|------------------|-------------|---------|----|----|
| Alcove | 62 $\frac{1}{4}$ | 39 $\frac{1}{4}$ | — | Box Out | 31 | 17 |



Rev. 09.16.24

