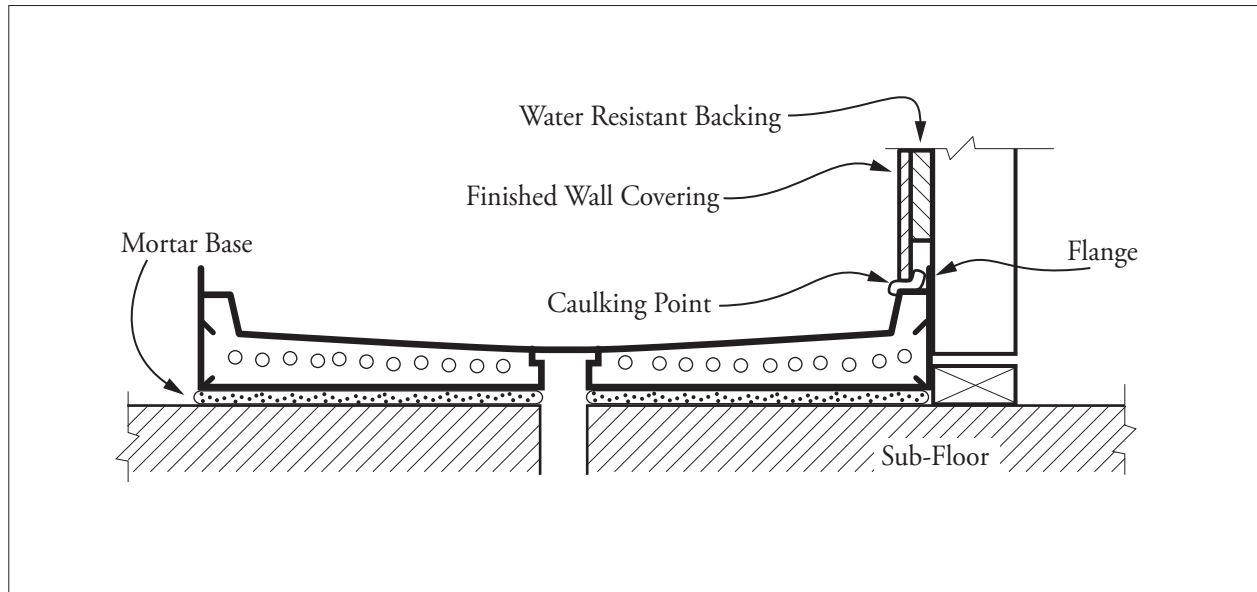


## Florestone Terrazzo Shower Receptors Installation Instructions



1. Dimensions may vary slightly in terrazzo products. For rough-in, allow  $\frac{1}{4}$ " more in height and  $\frac{3}{8}$ " more in width than the dimensions shown on drawings.
2. Examine sub-floor shower area for Movement and/or squeaks. Fix any problems encountered.
3. Place receptor on a minimum  $\frac{1}{4}$ " bed of mortar or plaster for warranty compliance.
4. Level and plumb pan on sub-floor, front to back, right to left.
5. After attaching drain, use water and check for proper drainage before finishing walls.

### Note:

On the Model 400 and 500 Series, an exterior floor drain is recommended.

**Dimensions may vary  $\pm \frac{1}{4}$ " inch. Please check unit before installation.**



**FLORESTONE PRODUCTS CO., INC.**

2851 Falcon Drive • Madera, CA 93637

T. 559.661.4171 • T. 800.446.8827

F. 559.661.2070 • florestone.com

# READ BEFORE REMOVING PACKAGING

## ALWAYS PRACTICE SAFE WORK HABITS WHEN HANDLING / INSTALLING THIS UNIT

### Installation Instructions and Warranty

#### TERRAZZO RECEPTORS / MOP SINKS LIMITED THREE YEAR WARRANTY

#### THIS WARRANTY SUPERSEDES ALL OTHER WARRANTIES / Jan. 2008

This warranty does not cover shipping damage. Such damage is the responsibility of the carrier.

The Buyer must inspect the product (wipe the exposed terrazzo surface with a damp cloth) for damage and or cracks upon receipt.

Freight claim should be filed directly with the carrier.

Buyer must inspect the product (wipe the exposed terrazzo surface with damp cloth) for damage and or cracks prior to uncrating the unit for installation. The damaged or defective crated unit is to be set aside.

Florestone is to be notified immediately for a representative to inspect the unit for determination of cause of damage or defect.

#### UNIT MUST BE IN ORIGINAL CRATE TO BE RETURNED TO FACTORY

Modification or alteration to a Florestone unit after it leaves the factory will void all warranties.

Special Order Terrazzo is Non Cancelable / Non Returnable

#### CHECK LOCAL BUILDING CODES

**Problems resulting from improper installation are the responsibility of the installer.**

**CAUTION:** Dropping or allowing the crated or uncrated unit to fall over will result in cracks radiating out from the drain and or across the unit.

**DIMENSIONS:** May vary ¼ inch plus or minus.  
**Measure unit and add ½ inch to dimensions for framing.**

Install 2 inch IPS pipe 1½ inch (minimum) above sub floor with 5 inch diameter x 2¼ inch recess in sub floor to connect drain.

Terrazzo unit(s) must be installed level in a bed of mortar (minimum ¼ inch thick) that covers the entire area between the unit and the sub floor (the sub floor may be uneven or not level) in order to properly support the weight of the unit to prevent stress cracks radiating out from the drain or across the unit.

Level the unit right to left and front to back.

Prior to beginning installation of the wall system, examine unit for construction damage and or cracks. If none, connect the drain and pour water into the unit and verify proper drainage of entire floor surface.

Apply water resistant caulking (approx. 1 inch diameter ball) to fill void at top front edge of threshold between metal flange and behind finished wall covering.

Surface of unit must be protected to prevent damage from dropped tools, other construction materials (i.e. paint, wire, screws, etc.) and other on site negligence.

## Three Year Limited Warranty

---

Florestone extends a limited warranty to the Buyer that TERRAZZO products of its own manufacture shall be free of defects in material and workmanship for the appropriate warranty period of three years. Buyer's written claims must be delivered to Florestone's address within ten (10) days of delivery and before the product / products are put into process or in any way changed from their original condition. If product is proven to be defective in workmanship or material after proper inspection, Florestone under the appropriate warranty will, in its sole discretion, upon receipt and verification of a written claim, either A) repair the product, B) replace the product or appropriate part with a Florestone product of similar type and size C) refund to Buyer the wholesale price of the product. If Florestone elects to refund the wholesale price to the Buyer, Florestone shall have no further obligation to Buyer, any wholesale consumer, or any contractor with respect to such product. No claim for damage incurred or for work done thereon will be allowed. Replacements, when supplied, will be shipped at no cost to the buyer.

No claim shall be made for proximate damages of a different amount, nor may any recovery be had for incidental, or special, contingent, consequential, exemplary, or punitive damages; costs of delay; cost of third parties arising from any source; or lost profits arising out of, or related to, any product sold by Florestone, even if Florestone has been advised of the possibility thereof and regardless of whether the claim is made in contract, tort or other theory or cause of action. Under no circumstances will Florestone be liable for any labor or other expenses not specifically stated above.

Florestone will not be responsible for any incidental or consequential damages arising from any cause what so ever, nor damage to the unit produced by outside causes, including but not limited to the following; improper installation, careless handling (may result in cracks radiating out from the drain), use of abrasive cleaners, lightning, flood, fire, or lack of cleaning, proper maintenance or an act of God.

All controversies arising out of or relating to the providing of products by Florestone shall be settled by arbitration in the County of Madera, State of California in accordance with the Commercial Arbitration Rules and Mediation Procedures of the American Arbitration Association.

Florestone's products are subject to change without notice due to technology and or material availability. It is suggested that you contact Florestone prior to starting a project, to verify that you have the latest information about our products and their dimensions.

Warranty of products of another manufacture sold by Florestone is limited to the warranty extended to Florestone by such provider.

**NOTE: Terrazzo surface should be recoated annually with a terrazzo / slate floor sealer. This sealer may be purchased at your local hardware store. Follow safety and application instructions.**