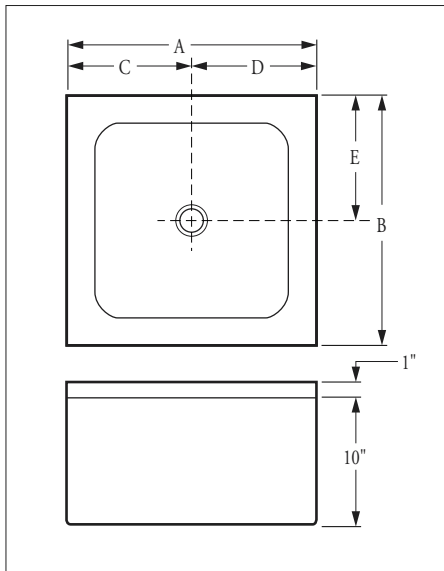
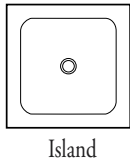




Shown: Model 5



Dimensions may vary
± ¼ inch — check unit
before installation.

A	B	HT.	C	D	E	WT.
24"	24"	10"	12"	12"	12"	221

FLORESTONE MODEL 5 TERRAZZO MOP RECEPTOR

Architect's Specifications

Furnish and install mop receptor as manufactured by Florestone Products Co. Shoulder shall be not less than 8" high inside and not less than 1¼" wide. Drain body shall be brass, cast integral and shall provide for a non-caulked connection (lead caulked optional) not less than one inch deep to a two or three inch pipe (specify 2" or 3"). Mop sinks with 3" drains are supplied with a Wedge-Lok® seal for use on ABS pipe only. Receptor shall be manufactured of tan and white marble chips cast in white portland cement to produce a compressive strength of not less than 3000 PSI, seven days after casting. Terrazzo surface shall be ground and polished with all air holes and/or pits to be grouted and excess removed and sealed to resist stains and moisture. Receptor will be reinforced with 16 gauge wire. Stainless steel grid standard.

Note:

Specify 2" or 3" drain size (3" standard).

 **FLORESTONE**
Quality Shower and Bath Products Since 1947.

FLORESTONE PRODUCTS CO., INC.

2851 Falcon Dr. • Madera, CA 93637-9287

Tel: 559-661-4171 • Fax: 559-661-2070

www.florestone.com