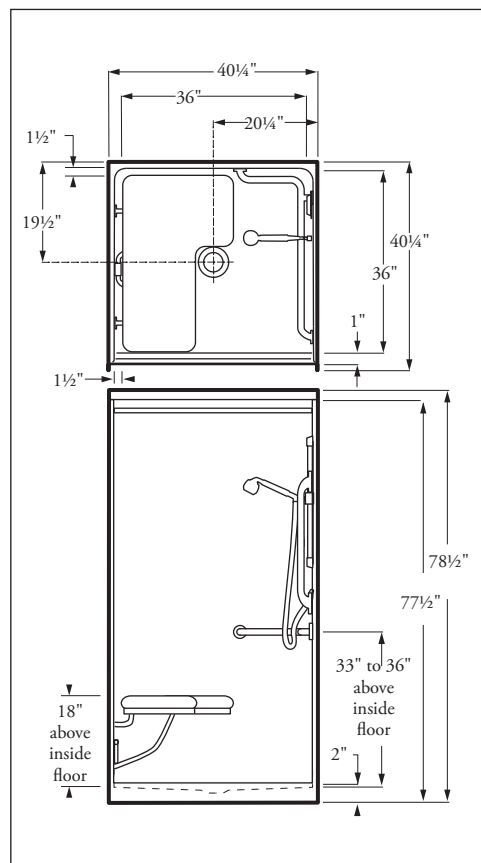




ADA
COMPLIANT*



Specify Right or Left Hand Seat

**Dimensions may vary ± 1/4" inch.
Please check unit before installation.**

For barrier-free installation, contractor shall provide 1 1/2" minimum recess for curb in sub floor.

ADA compliance when accessories installed by manufacturer.
Note: Exterior floor drain for water run-off recommended.
Symmons® is a Registered Trade Mark of Symmons Industries, Inc.
Alsons® is a Registered Trade Mark of Alsons Corporation.

Dimensions subject to
change without notice.

Contact Florestone
Products to verify
product specifications.

**Florestone
Model 40-40H
Barrier-Free Shower**

40 1/4" x 40 1/4" x 78"
Weight: 205 lbs.

**Architect's
Specifications**

Furnish and install one-piece gel-coated fiberglass shower stall Model 40-40H designed for barrier-free use as manufactured by Florestone Products Company. Unit to have a flame spread of 25 and a smoke density rating of 400 or less in accordance with ASTM-E84 test method. Basic shower will conform to ANSI-Z-124.2. Unit to include stainless steel curtain rod; Symmons® pressure balance mixing valve with concealed check stops; Alsons® hand-held shower head with hose and chrome-plated slide bar; stainless steel corner grab bar; stainless steel recessed soap dish; white naugahyde folding wheelchair transfer seat (*specify right or left hand*).

Supplied with 2" brass drain.

Shower curtain optional.

Curtain Size: 45" x 72".

Standard Color: White.

Special order colors available.

Standards:

I.A.P.M.O. File No. 0687
ANSI-Z-124.2
ASTM-E84



FLORESTONE PRODUCTS CO., INC.

2851 Falcon Drive • Madera, CA 93637

T. 559.661.4171 • T. 800.446.8827

F. 559.661.2070 • florestone.com

**Florestone
Model 3PC-40-40H
Barrier-Free Shower**

40¼" x 40¼" x 78½"
Weight: 215 lbs.

**Architect's
Specifications**

Furnish and install three-piece gel-coated fiberglass shower stall Model 3PC-40-40H designed for barrier-free use as manufactured by Florestone Products Company. Unit to have a flame spread of 25 and a smoke density rating of 400 or less in accordance with ASTM-E84 test method. Basic shower will conform to ANSI-Z-124.2. and the accessorized module to ANSI-A-117.1. Unit to include stainless steel curtain rod; Symmons® pressure balance mixing valve with concealed check stops; Alsons® hand-held shower head with hose and chrome-plated slide bar; stainless steel corner grab bar; stainless steel recessed soap dish; white naugahyde folding wheelchair transfer seat (specify right or left hand).

Supplied with 2" brass drain.

Shower curtain optional.

Curtain Size: 45" x 75".

Standard Color: White.

Special order colors available.

Standards:

I.A.P.M.O. File No. 0687
ANSI-Z-124.2 & ANSI-A-117.1
ASTM-E84



FLORESTONE PRODUCTS CO., INC.

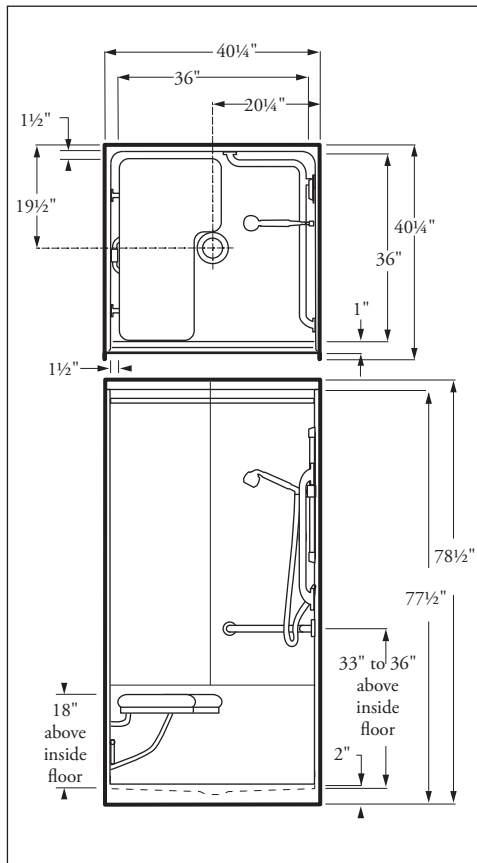
2851 Falcon Drive • Madera, CA 93637

T. 559.661.4171 • T. 800.446.8827

F. 559.661.2070 • florestone.com



ADA
COMPLIANT*



Specify Right or Left Hand Seat

**Dimensions may vary ± ¼" inch.
Please check unit before installation.**

For barrier-free installation, contractor shall provide 1½" minimum recess for curb in sub floor.

ADA compliance when accessories installed by manufacturer.
Note: Exterior floor drain for water run-off recommended.
Symmons® is a Registered Trade Mark of Symmons Industries, Inc.
Alsons® is a Registered Trade Mark of Alsons Corporation.

Dimensions subject to
change without notice.

Contact Florestone
Products to verify
product specifications.

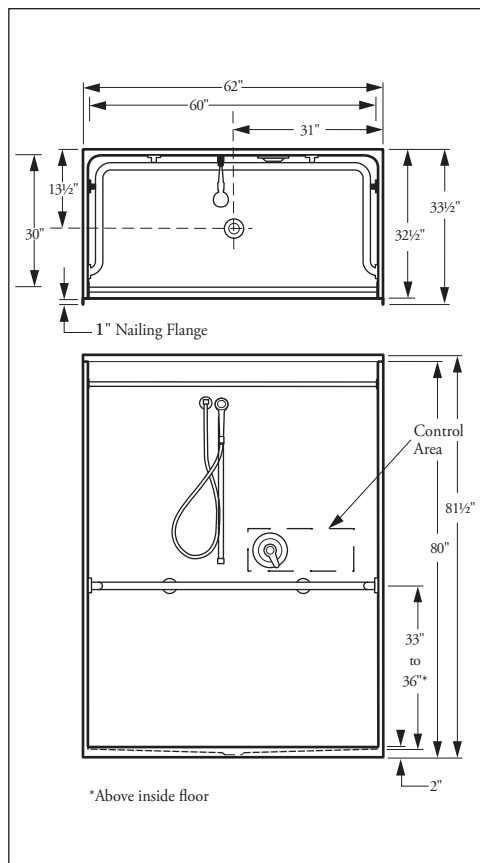


ADA
COMPLIANT*



Shower comes complete with accessories:

- Stainless steel curtain rod
- Symmons® pressure balance mixing valve
- Alsons® hand-held shower head, hose and chrome-plated slide bar
- Stainless steel wrap-around grab bar
- Stainless steel recessed soap dish



*Above inside floor

Dimensions may vary ± 1/4" inch. Please check unit before installation.

For barrier-free installation, contractor shall provide 1 3/4" minimum recess for curb in sub floor.

ADA compliance when accessories installed by manufacturer.
Note: Exterior floor drain for water run-off recommended.
Symmons® is a Registered Trade Mark of Symmons Industries, Inc.
Alsons® is a Registered Trade Mark of Alsons Corporation.

Dimensions subject to change without notice.

Contact Florestone Products to verify product specifications.

Florestone Model 34-62H Barrier-Free Shower

O.D. = 62" x 33 1/2" x 81 1/2"

I.D. = 60" x 31 1/2" x 78"

Weight: 255 lbs.

Architect's Specifications

Furnish and install one-piece gel-coated fiberglass shower stall Model 34-62H designed for barrier-free use as manufactured by Florestone Products Company. Unit to have a flame spread of 25 and a smoke density rating of 400 or less in accordance with ASTM-E84 test method. Basic shower will conform to ANSI-Z-124.2, and the accessorized module to ANSI-A-117.1. Unit to include stainless steel curtain rod; Symmons® pressure balance mixing valve with concealed check stops; Alsons® hand-held shower head with hose and chrome-plated slide bar; stainless steel wrap-around grab bar; stainless steel recessed soap dish.

Supplied with 2" brass drain.

Shower curtain optional.

Curtain Size: 72" x 78".

Standard Color: White.

Special order colors available.

Standards:

I.A.P.M.O. File No. 0687

ANSI-Z-124.2 & ANSI-A-117.1

ASTM-E84



FLORESTONE PRODUCTS CO., INC.

2851 Falcon Drive • Madera, CA 93637

T. 559.661.4171 • T. 800.446.8827

F. 559.661.2070 • florestone.com

**Florestone
Model 3PC-34-62H
Barrier-Free Shower**

O.D. = 62" x 33½" x 81½"
I.D. = 60" x 31½" x 78"
Weight: 255 lbs.

**Architect's
Specifications**

Furnish and install three-piece gel-coated fiberglass shower stall Model 3PC-34-62H designed for barrier-free use as manufactured by Florestone Products Company. Unit to have a flame spread of 25 and a smoke density rating of 400 or less in accordance with ASTM-E84 test method. Basic shower will conform to ANSI-Z-124.2. and the accessorized module to ANSI-A-117.1. Unit to include stainless steel curtain rod; Symmons® pressure balance mixing valve with concealed check stops; Alsons® hand-held shower head with hose and chrome-plated slide bar; stainless steel wrap-around grab bar; stainless steel recessed soap dish.

Supplied with 2" brass drain.

Shower curtain optional.

Curtain Size: 72" x 78".

Standard Color: White.

Special order colors available.

Standards:

I.A.P.M.O. File No. 0687
ANSI-Z-124.2 & ANSI-A-117.1
ASTM-E84

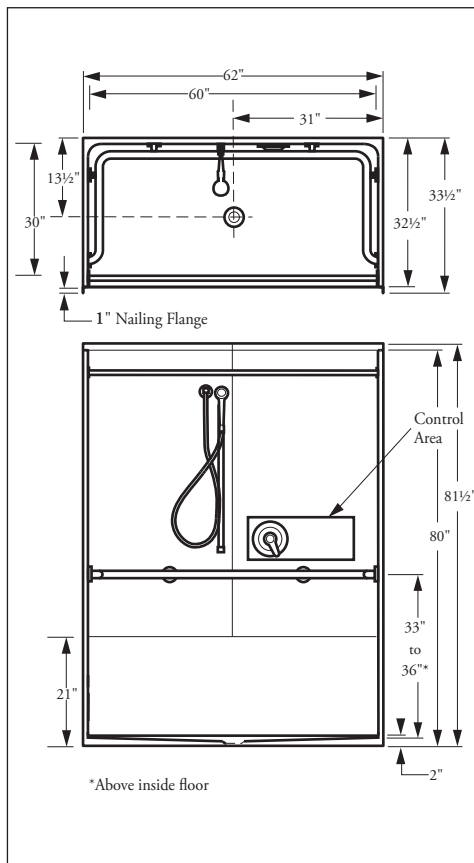


FLORESTONE PRODUCTS CO., INC.

2851 Falcon Drive • Madera, CA 93637

T. 559.661.4171 • T. 800.446.8827

F. 559.661.2070 • florestone.com



ADA
COMPLIANT*

**Shower
comes complete
with accessories:**

- Stainless steel curtain rod
- Symmons® pressure balance mixing valve
- Alsons® hand-held shower head, hose and chrome-plated slide bar
- Stainless steel wrap-around grab bar
- Stainless steel recessed soap dish

**Dimensions may vary ± ¼" inch.
Please check unit before installation.**

For barrier-free installation, contractor shall provide 1¾" minimum recess for curb in sub floor.

ADA compliance when accessories installed by manufacturer.
Note: Exterior floor drain for water run-off recommended.
Symmons® is a Registered Trade Mark of Symmons Industries, Inc.
Alsons® is a Registered Trade Mark of Alsons Corporation.

**Dimensions subject to
change without notice.**

**Contact Florestone
Products to verify
product specifications.**



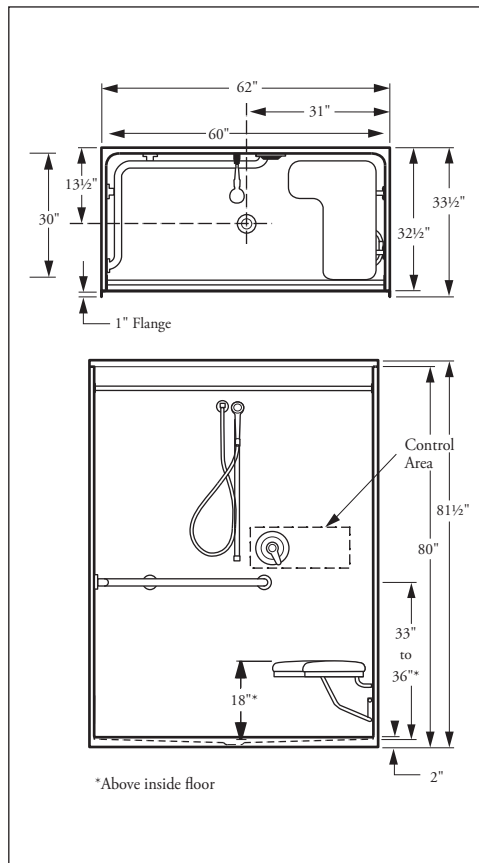
ADA
COMPLIANT*

CALIFORNIA
ADA
COMPLIANT*

Note: Units sold in CA

DO NOT come with a slide bar.

Instead a stationary wall hook
will be installed per CA-ADA
requirements (2008).



Specify Right or Left Hand Seat

**Dimensions may vary ± 1/4" inch.
Please check unit before installation.**

For barrier-free installation, contractor shall provide 1 3/4" minimum recess for curb in sub floor.

ADA compliance when accessories installed by manufacturer.
Note: Exterior floor drain for water run-off recommended.
Symmons® is a Registered Trade Mark of Symmons Industries, Inc.
Alsons® is a Registered Trade Mark of Alsons Corporation.

Dimensions subject to
change without notice.

Contact Florestone
Products to verify
product specifications.

**Florestone
Model 35-62H
Barrier-Free Shower**

O.D. = 62" x 33 1/2" x 81 1/2"

I.D. = 60" x 31 1/2" x 78"

Weight: 280 lbs.

**Architect's
Specifications**

Furnish and install one-piece gel-coated fiberglass shower stall Model 35-62H designed for barrier-free use as manufactured by Florestone Products Company. Unit to have a flame spread of 25 and a smoke density rating of 400 or less in accordance with ASTM-E84 test method. Basic shower will conform to ANSI-Z-124.2 and the accessorized module to ANSI-A-117.1. Unit to include stainless steel curtain rod; Symmons® pressure balance mixing valve with concealed check stops; Alsons® hand-held shower head with hose and chrome-plated slide bar; stainless steel corner grab bar; stainless steel recessed soap dish; white naughyde folding wheelchair transfer seat (specify right or left hand).

Supplied with 2" brass drain.

Shower curtain optional.

Curtain Size: 72" x 78".

Standard Color: White.

Special order colors available.

Standards:

I.A.P.M.O. File No. 0687

ANSI-Z-124.2 & ANSI-A-117.1

ASTM-E84 • CA-TITLE-24



FLORESTONE PRODUCTS CO., INC.

2851 Falcon Drive • Madera, CA 93637

T. 559.661.4171 • T. 800.446.8827

F. 559.661.2070 • florestone.com

**Florestone
Model 3PC-35-62H
Barrier-Free Shower**

O.D. = 62" x 33½" x 81½"
I.D. = 60" x 31½" x 78"
Weight: 290 lbs.

**Architect's
Specifications**

Furnish and install three-piece gel-coated fiberglass shower stall Model 3PC-35-62H designed for barrier-free use as manufactured by Florestone Products Company. Unit to have a flame spread of 25 and a smoke density rating of 400 or less in accordance with ASTM-E84 test method. Basic shower will conform to ANSI-Z-124.2 and the accessorized module to ANSI-A-117.1. Unit to include stainless steel curtain rod; Symmons® pressure balance mixing valve with concealed check stops; Alsons® hand-held shower head with hose and chrome-plated slide bar; stainless steel corner grab bar; stainless steel recessed soap dish; white naughahyde folding wheelchair transfer seat (specify right or left hand).

Supplied with 2" brass drain.

Shower curtain optional.

Curtain Size: 72" x 78".

Standard Color: White.

Special order colors available.

Standards:

I.A.P.M.O. File No. 0687
ANSI-Z-124.2 & ANSI-A-117.1
ASTM-E84 • CA-TITLE-24

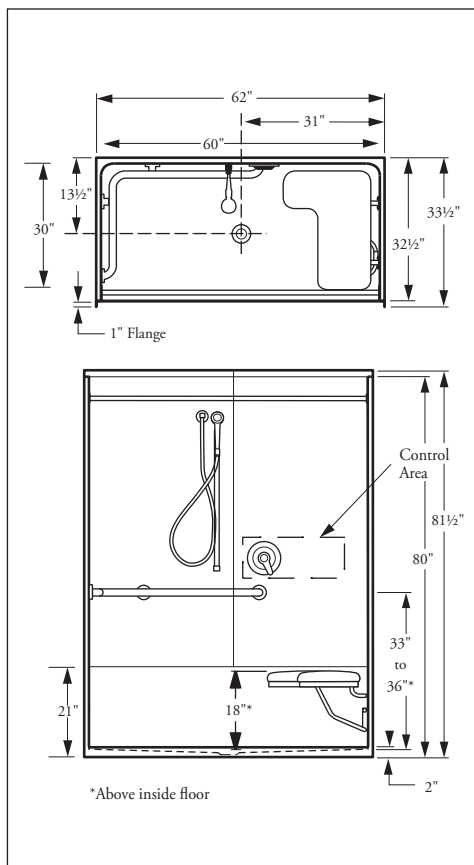


FLORESTONE PRODUCTS CO., INC.

2851 Falcon Drive • Madera, CA 93637

T. 559.661.4171 • T. 800.446.8827

F. 559.661.2070 • florestone.com



Specify Right or Left Hand Seat

**Dimensions may vary ± ¼" inch.
Please check unit before installation.**

For barrier-free installation, contractor shall provide 1¾" minimum recess for curb in sub floor.

ADA compliance when accessories installed by manufacturer.
Note: Exterior floor drain for water run-off recommended.
Symmons® is a Registered Trade Mark of Symmons Industries, Inc.
Alsons® is a Registered Trade Mark of Alsons Corporation.



ADA
COMPLIANT*

CALIFORNIA
ADA
COMPLIANT*

Note: Units sold in CA

DO NOT come with a slide bar.
Instead a stationary wall hook
will be installed per CA-ADA
requirements (2008).

Dimensions subject to
change without notice.

Contact Florestone
Products to verify
product specifications.

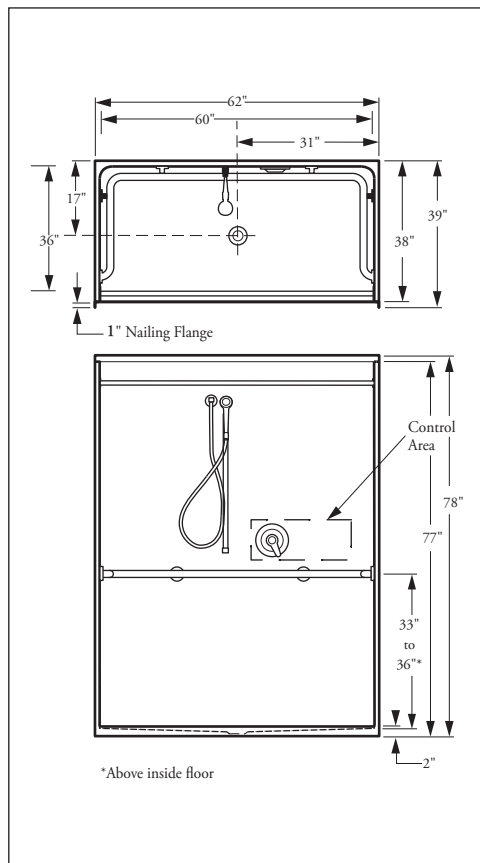


ADA
COMPLIANT*



Shower comes complete with accessories:

- Stainless steel curtain rod
- Symmons® pressure balance mixing valve
- Alsons® hand-held shower head, hose and chrome-plated slide bar
- Stainless steel wrap-around grab bar
- Stainless steel recessed soap dish



*Above inside floor

Dimensions may vary \pm 1/4" inch. Please check unit before installation.

For barrier-free installation, contractor shall provide 1 3/4" minimum recess for curb in sub floor.

ADA compliance when accessories installed by manufacturer.
Note: Exterior floor drain for water run-off recommended.
Symmons® is a Registered Trade Mark of Symmons Industries, Inc.
Alsons® is a Registered Trade Mark of Alsons Corporation.

Dimensions subject to change without notice.

Contact Florestone Products to verify product specifications.

Florestone Model 39-62H Barrier-Free Shower

O.D. = 62" x 39" x 78"

I.D. = 60" x 37" x 75"

Weight: 285 lbs.

Architect's Specifications

Furnish and install one-piece gel-coated fiberglass shower stall Model 39-62H designed for barrier-free use as manufactured by Florestone Products Company. Unit to have a flame spread of 25 and a smoke density rating of 400 or less in accordance with ASTM-E84 test method. Basic shower will conform to ANSI-Z-124.2. and the accessorized module to ANSI-A-117.1. Unit to include stainless steel curtain rod; Symmons® pressure balance mixing valve with concealed check stops; Alsons® hand-held shower head with hose and chrome-plated slide bar; stainless steel wrap-around grab bar; stainless steel recessed soap dish.

Supplied with 2" brass drain.

Shower curtain optional.

Curtain Size: 72" x 72".

Standard Color: White.

Special order colors available.

Standards:

I.A.P.M.O. File No. 0687

ANSI-Z-124.2 & ANSI-A-117.1

ASTM-E84



FLORESTONE PRODUCTS CO., INC.

2851 Falcon Drive • Madera, CA 93637

T. 559.661.4171 • T. 800.446.8827

F. 559.661.2070 • florestone.com

Florestone Model 39-62H Tile Back Barrier-Free Shower

O.D. = 62" x 39" x 78"

I.D. = 60" x 37" x 75"

Weight: 285 lbs.

Architect's Specifications

Furnish and install one-piece gel-coated fiberglass shower stall Model 39-62H TB designed for barrier-free use as manufactured by Florestone Products Company. Unit to have a flame spread of 25 and a smoke density rating of 400 or less in accordance with ASTM-E84 test method. Basic shower will conform to ANSI-Z-124.2. and the accessorized module to ANSI-A-117.1. Unit to include stainless steel curtain rod; Symmons® pressure balance mixing valve with concealed check stops; Alsons® hand-held shower head with hose and chrome-plated slide bar; stainless steel wrap-around grab bar; stainless steel recessed soap dish.

Supplied with 2" brass drain.

Shower curtain optional.

Curtain Size: 72" x 72".

Standard Color: White.

Special order colors available.

Standards:

I.A.P.M.O. File No. 0687

ANSI-Z-124.2 & ANSI-A-117.1

ASTM-E84



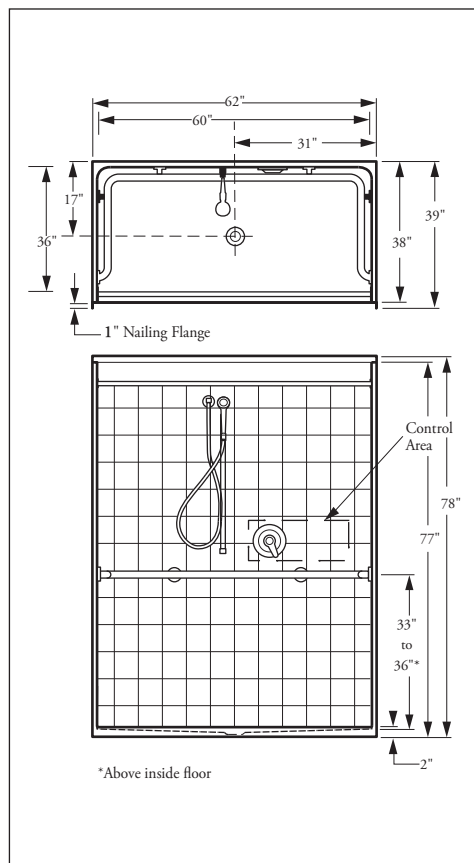
FLORESTONE
A Spec Above.™

FLORESTONE PRODUCTS CO., INC.

2851 Falcon Drive • Madera, CA 93637

T. 559.661.4171 • T. 800.446.8827

F. 559.661.2070 • florestone.com



*Above inside floor



ADA
COMPLIANT*

Shower comes complete with accessories:

- Stainless steel curtain rod
- Symmons® pressure balance mixing valve
- Alsons® hand-held shower head, hose and chrome-plated slide bar
- Stainless steel wrap-around grab bar
- Stainless steel recessed soap dish

Dimensions may vary \pm 1/4" inch. Please check unit before installation.

For barrier-free installation, contractor shall provide 1 3/4" minimum recess for curb in sub floor.

ADA compliance when accessories installed by manufacturer.
Note: Exterior floor drain for water run-off recommended.
Symmons® is a Registered Trade Mark of Symmons Industries, Inc.
Alsons® is a Registered Trade Mark of Alsons Corporation.

Dimensions subject to
change without notice.

Contact Florestone
Products to verify
product specifications.

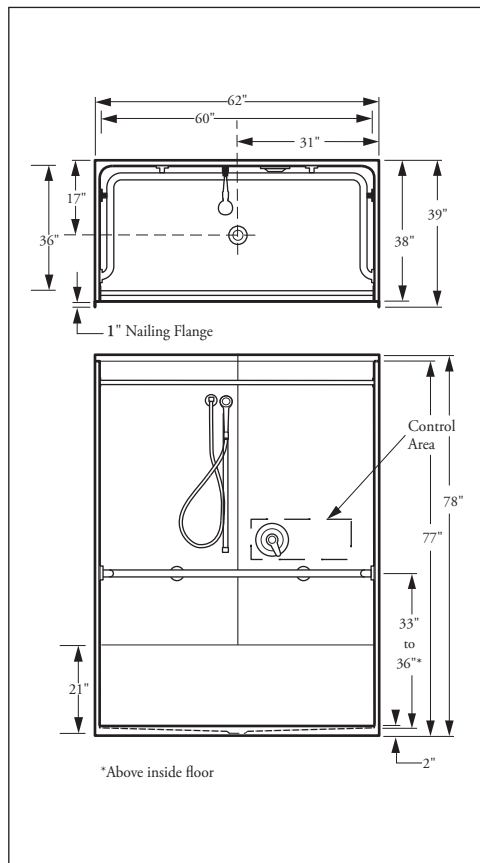


ADA
COMPLIANT*



Shower comes complete with accessories:

- Stainless steel curtain rod
- Symmons® pressure balance mixing valve
- Alsons® hand-held shower head, hose and chrome-plated slide bar
- Stainless steel wrap-around grab bar
- Stainless steel recessed soap dish



Dimensions subject to change without notice.

Contact Florestone Products to verify product specifications.

Dimensions may vary ± 1/4" inch. Please check unit before installation.

For barrier-free installation, contractor shall provide 1 3/4" minimum recess for curb in sub floor.

ADA compliance when accessories installed by manufacturer.
Note: Exterior floor drain for water run-off recommended.
Symmons® is a Registered Trade Mark of Symmons Industries, Inc.
Alsons® is a Registered Trade Mark of Alsons Corporation.

Florestone Model 3PC-39-62H Barrier-Free Shower

O.D. = 62" x 39" x 78"
I.D. = 60" x 37" x 75"
Weight: 295 lbs.

Architect's Specifications

Furnish and install three-piece gel-coated fiberglass shower stall Model 3PC-39-62H designed for barrier-free use as manufactured by Florestone Products Company. Unit to have a flame spread of 25 and a smoke density rating of 400 or less in accordance with ASTM-E84 test method. Basic shower will conform to ANSI-Z-124.2 and the accessorized module to ANSI-A-117.1. Unit to include stainless steel curtain rod; Symmons® pressure balance mixing valve with concealed check stops; Alsons® hand-held shower head with hose and chrome-plated slide bar; stainless steel wrap-around grab bar; stainless steel recessed soap dish.

Supplied with 2" brass drain.

Shower curtain optional.

Curtain Size: 72" x 72".

Standard Color: White.

Special order colors available.

Standards:

I.A.P.M.O. File No. 0687
ANSI-Z-124.2 & ANSI-A-117.1
ASTM-E84



FLORESTONE PRODUCTS CO., INC.

2851 Falcon Drive • Madera, CA 93637

T. 559.661.4171 • T. 800.446.8827

F. 559.661.2070 • florestone.com

Florestone Model 40-62H Tile Back Barrier-Free Shower

O.D. = 62" x 39" x 78"

I.D. = 60" x 37" x 75"

Weight: 310 lbs.

Architect's Specifications

Furnish and install one-piece gel-coated fiberglass shower stall Model 40-62H TB designed for barrier-free use as manufactured by Florestone Products Company. Unit to have a flame spread of 25 and a smoke density rating of 400 or less in accordance with ASTM-E84 test method. Basic shower will conform to ANSI-Z-124.2 and the accessorized module to ANSI-A-117.1. Unit to include stainless steel curtain rod; Symmons® pressure balance mixing valve with concealed check stops; Alsons® hand-held shower head with hose and mounting bracket; stainless steel corner grab bar; stainless steel recessed soap dish; white naugahyde folding wheelchair transfer seat (specify right or left hand).

Supplied with 2" brass drain.

Shower curtain optional.

Curtain Size: 72" x 72".

Standard Color: White.

Special order colors available.

Standards:

I.A.P.M.O. File No. 0687
ANSI-Z-124.2 & ANSI-A-117.1
ASTM-E84 • CA-TITLE-24

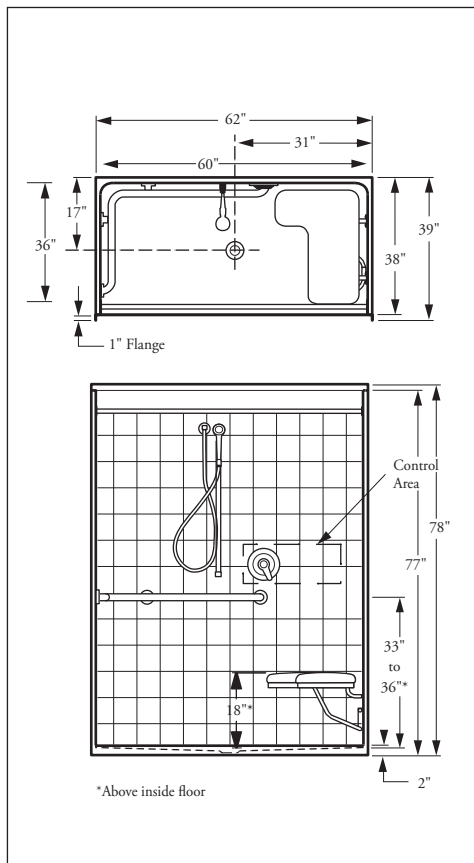


FLORESTONE PRODUCTS CO., INC.

2851 Falcon Drive • Madera, CA 93637

T. 559.661.4171 • T. 800.446.8827

F. 559.661.2070 • florestone.com



Specify Right or Left Hand Seat

Dimensions may vary $\pm \frac{1}{4}$ " inch.
Please check unit before installation.

For barrier-free installation, contractor shall provide $1\frac{3}{4}$ " minimum recess for curb in sub floor.

ADA compliance when accessories installed by manufacturer.
Note: Exterior floor drain for water run-off recommended.
Symmons® is a Registered Trade Mark of Symmons Industries, Inc.
Alsons® is a Registered Trade Mark of Alsons Corporation.



ADA
COMPLIANT*

CALIFORNIA

ADA
COMPLIANT*

Note: Units sold in CA

DO NOT come with a slide bar.

Instead a stationary wall hook

will be installed per CA-ADA

requirements (2008).

Shower comes complete with accessories:

- Stainless steel curtain rod
- Symmons® pressure balance mixing valve
- Alsons® hand-held shower head, hose and chrome-plated slide bar
- Stainless steel wrap-around grab bar
- Stainless steel recessed soap dish
- White naugahyde folding wheelchair transfer seat (specify right or left; hand)
- **Optional:** Phenolic folding wheelchair transfer seat (specify right or left hand)

Dimensions subject to
change without notice.

Contact Florestone
Products to verify
product specifications.



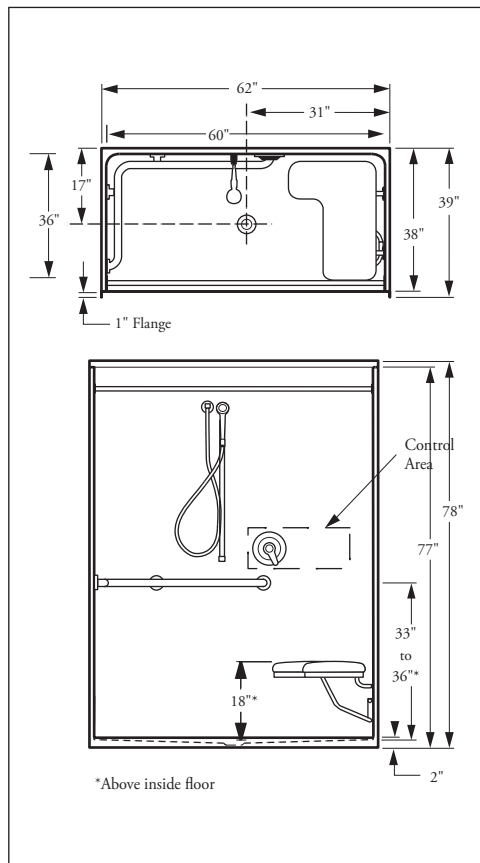
ADA
COMPLIANT*

CALIFORNIA
ADA
COMPLIANT*

Note: Units sold in CA

DO NOT come with a slide bar.

Instead a stationary wall hook
will be installed per CA-ADA
requirements (2008).



Specify Right or Left Hand Seat

**Dimensions may vary ± 1/4" inch.
Please check unit before installation.**

For barrier-free installation, contractor shall provide 1 3/4" minimum recess for curb in sub floor.

ADA compliance when accessories installed by manufacturer.
Note: Exterior floor drain for water run-off recommended.
Symmons® is a Registered Trade Mark of Symmons Industries, Inc.
Alsons® is a Registered Trade Mark of Alsons Corporation.

Dimensions subject to
change without notice.

Contact Florestone
Products to verify
product specifications.

**Florestone
Model 40-62H
Barrier-Free Shower**

O.D. = 62" x 39" x 78"

I.D. = 60" x 37" x 75"

Weight: 310 lbs.

**Architect's
Specifications**

Furnish and install one-piece gel-coated fiberglass shower stall Model 40-62H designed for barrier-free use as manufactured by Florestone Products Company. Unit to have a flame spread of 25 and a smoke density rating of 400 or less in accordance with ASTM-E84 test method. Basic shower will conform to ANSI-Z-124.2 and the accessorized module to ANSI-A-117.1. Unit to include stainless steel curtain rod; Symmons® pressure balance mixing valve with concealed check stops; Alsons® hand-held shower head with hose and chrome-plated slide bar; stainless steel corner grab bar; stainless steel recessed soap dish; white naughahyde folding wheelchair transfer seat (specify right or left hand).

Supplied with 2" brass drain.

Shower curtain optional.

Curtain Size: 72" x 72".

Standard Color: White.

Special order colors available.

Standards:

I.A.P.M.O. File No. 0687

ANSI-Z-124.2 & ANSI-A-117.1

ASTM-E84 • CA-TITLE-24



FLORESTONE PRODUCTS CO., INC.

2851 Falcon Drive • Madera, CA 93637

T. 559.661.4171 • T. 800.446.8827

F. 559.661.2070 • florestone.com

**Florestone
Model 3PC-40-62H
Barrier-Free Shower**

O.D. = 62" x 39" x 78"
I.D. = 60" x 37" x 75"
Weight: 320 lbs.

**Architect's
Specifications**

Furnish and install three-piece gel-coated fiberglass shower stall Model 3PC-40-62H designed for barrier-free use as manufactured by Florestone Products Company. Unit to have a flame spread of 25 and a smoke density rating of 400 or less in accordance with ASTM-E84 test method. Basic shower will conform to ANSI-Z-124.2 and the accessorized module to ANSI-A-117.1. Unit to include stainless steel curtain rod; Symmons® pressure balance mixing valve with concealed check stops; Alsons® hand-held shower head with hose and chrome-plated slide bar; stainless steel corner grab bar; stainless steel recessed soap dish; white naugahyde folding wheelchair transfer seat (specify right or left hand).

Supplied with 2" brass drain.

Shower curtain optional.

Curtain Size: 72" x 72".

Standard Color: White.

Special order colors available.

Standards:

I.A.P.M.O. File No. 0687
ANSI-Z-124.2 & ANSI-A-117.1
ASTM-E84 • CA-TITLE-24

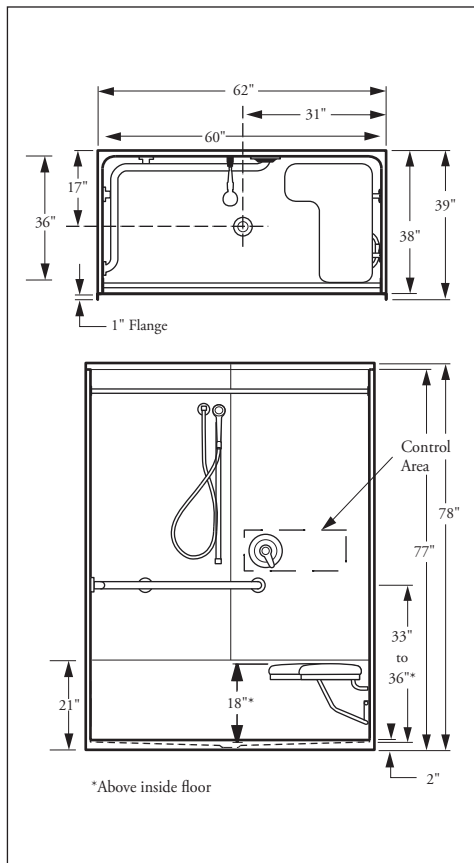


FLORESTONE PRODUCTS CO., INC.

2851 Falcon Drive • Madera, CA 93637

T. 559.661.4171 • T. 800.446.8827

F. 559.661.2070 • florestone.com



Specify Right or Left Hand Seat

**Dimensions may vary ± 1/4" inch.
Please check unit before installation.**

For barrier-free installation, contractor shall provide 1 3/4" minimum recess for curb in sub floor.

ADA compliance when accessories installed by manufacturer.
Note: Exterior floor drain for water run-off recommended.
Symmons® is a Registered Trade Mark of Symmons Industries, Inc.
Alsons® is a Registered Trade Mark of Alsons Corporation.



ADA
COMPLIANT*

CALIFORNIA
ADA
COMPLIANT*

Note: Units sold in CA
DO NOT come with a slide bar.
Instead a stationary wall hook
will be installed per CA-ADA
requirements (2008).

Dimensions subject to
change without notice.

Contact Florestone
Products to verify
product specifications.



ADA
COMPLIANT*

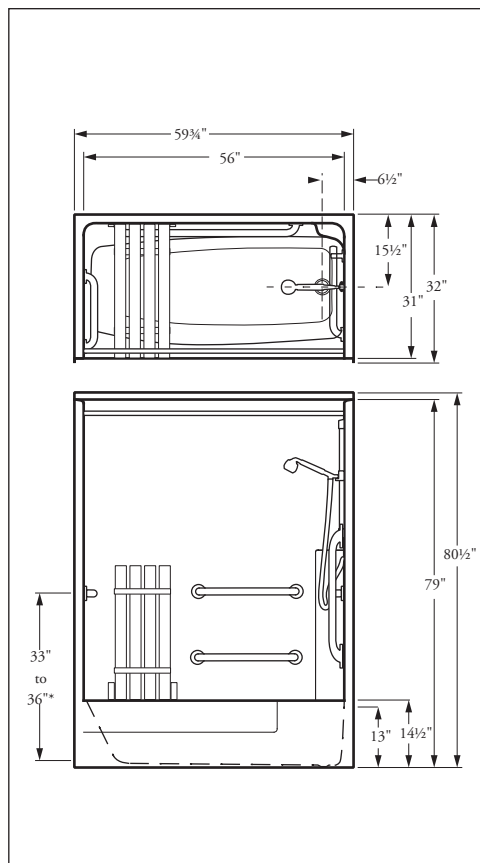
CALIFORNIA
ADA
COMPLIANT*

Note: Units sold in CA
DO NOT come with a slide bar.
Instead a stationary wall hook
will be installed per CA-ADA
requirements (2008).



**Tub-Shower
comes complete
with accessories:**

- Stainless steel curtain rod
- Symmons® pressure balance mixing valve
- Alsons® hand-held shower head, hose and chrome-plated slide bar
- Stainless steel grab bars: 3 each 24", 1 each 18"
- Molded corner soap dish
- Folding seat



Specify Right or Left Hand Drain

**Dimensions may vary ± 1/4" inch.
Please check unit before installation.**

**Dimensions subject to
change without notice.**

**Contact Florestone
Products to verify
product specifications.**

Symmons® is a Registered Trade Mark of Symmons Industries, Inc.
Alsons® is a Registered Trade Mark of Alsons Corporation.

**Florestone
Model 60-31HTS
Tub/Shower**

59 3/4" x 32" x 80 1/2"
Weight: 200 lbs.

**Architect's
Specifications**

Furnish and install one-piece gel-coated fiberglass shower stall Model 60-31HTS designed for barrier-free use as manufactured by Florestone Products Company. Unit to have a flame spread of 25 and a smoke density rating of 400 or less in accordance with ASTM-E84 test method. Basic shower will conform to ANSI-Z-124.2 and the accessorized module to ANSI-A-117.1. Unit to include stainless steel curtain rod; Symmons® pressure balance mixing valve with concealed check stops; Alsons® hand-held shower head with hose and chrome-plated slide bar; stainless steel grab bars; 3 each 24", 2 each 18"; molded corner soap dish; folding seat.

Shower curtain optional.

Curtain Size: 72" x 72".

Standard Color: White.

Special order colors available.

Standards:

I.A.P.M.O. File No. 0687
ANSI-Z-124.2 & ANSI-A-117.1
ASTM-E84 • CA-TITLE-24



FLORESTONE PRODUCTS CO., INC.

2851 Falcon Drive • Madera, CA 93637

T. 559.661.4171 • T. 800.446.8827

F. 559.661.2070 • florestone.com

**Florestone
Model 60-31HTS Tile Back
Tub/Shower**

59¾" x 32" x 80½"
Weight: 200 lbs.

**Architect's
Specifications**

Furnish and install one-piece gel-coated fiberglass shower stall Model 60-31 HTS TB as manufactured by Florestone Products Company. Unit to have a flame spread of 25 and a smoke density rating of 400 or less in accordance with ASTM-E84 test method. Basic shower will conform to ANSI-Z-124.2 and the accessorized module to ANSI-A-117.1. Unit to include stainless steel curtain rod; Symmons® pressure balance mixing valve with concealed check stops; Alsons® hand-held shower head with hose and mounting bracket; stainless steel grab bars; 3 each 24", 2 each 18"; molded corner soap dish; folding seat.

Shower curtain optional

Curtain Size: 72" x 72"

Standard Color: White

Special order colors available

Standards:

I.A.P.M.O. File No. 0687
ANSI-Z-124.2 & ANSI-A-117.1
ASTM-E84 • CA-TITLE-24

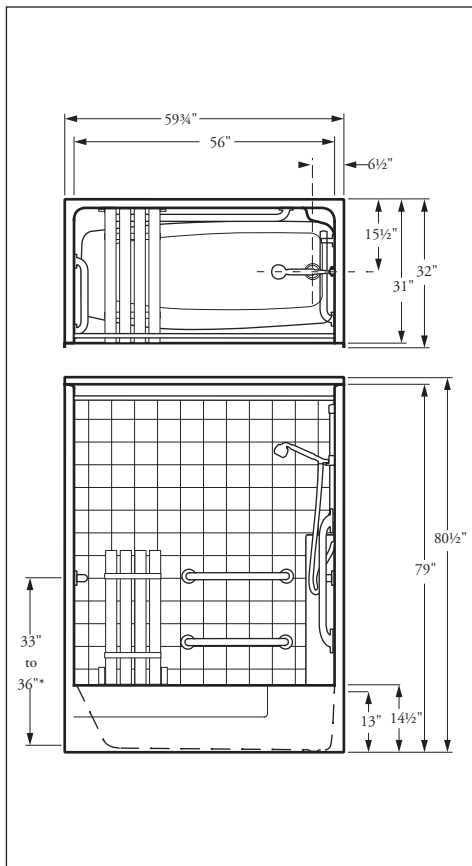


FLORESTONE PRODUCTS CO., INC.

2851 Falcon Drive • Madera, CA 93637

T. 559.661.4171 • T. 800.446.8827

F. 559.661.2070 • florestone.com



Specify Right or Left Hand Drain

**Dimensions may vary ± ¼" inch.
Please check unit before installation.**

Symmons® is a Registered Trade Mark of Symmons Industries, Inc.
Alsons® is a Registered Trade Mark of Alsons Corporation.



**ADA
COMPLIANT***

**CALIFORNIA
ADA
COMPLIANT***

Note: Units sold in CA
DO NOT come with a slide bar.
Instead a stationary wall hook
will be installed per CA-ADA
requirements (2008).

**Tub-Shower
comes complete
with accessories:**

- Stainless steel curtain rod
- Symmons® pressure balance mixing valve
- Alsons® hand-held shower head, hose and chrome-plated slide bar
- Stainless steel grab bars: 3 each 24", 1 each 18"
- Molded corner soap dish
- Folding seat

**Dimensions subject to
change without notice.**

**Contact Florestone
Products to verify
product specifications.**



ADA
COMPLIANT*

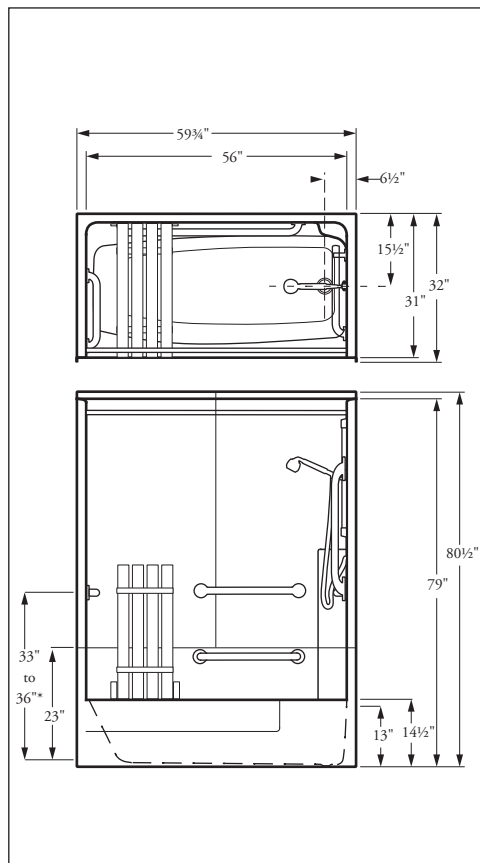
CALIFORNIA
ADA
COMPLIANT*

Note: Units sold in CA
DO NOT come with a slide bar.
Instead a stationary wall hook
will be installed per CA-ADA
requirements (2008).



**Tub-Shower
comes complete
with accessories:**

- Stainless steel curtain rod
- Symmons® pressure balance mixing valve
- Alsons® hand-held shower head, hose and chrome-plated slide bar
- Stainless steel grab bars: 3 each 24", 1 each 18"
- Molded corner soap dish
- Folding seat



Specify Right or Left Hand Seat

**Dimensions may vary ± 1/4" inch.
Please check unit before installation.**

**Dimensions subject to
change without notice.**

**Contact Florestone
Products to verify
product specifications.**

Symmons® is a Registered Trade Mark of Symmons Industries, Inc.
Alsons® is a Registered Trade Mark of Alsons Corporation.

**Florestone
Model 3PC-60-31HTS
Tub/Shower**

59 3/4" x 32" x 80 1/2"
Weight: 200 lbs.

**Architect's
Specifications**

Furnish and install one-piece gel-coated fiberglass shower stall Model 3PC-60-31HTS designed for barrier-free use as manufactured by Florestone Products Company. Unit to have a flame spread of 25 and a smoke density rating of 400 or less in accordance with ASTM-E84 test method. Basic shower will conform to ANSI-Z-124.2 and the accessorized module to ANSI-A-117.1. Unit to include stainless steel curtain rod; Symmons® pressure balance mixing valve with concealed check stops; Alsons® hand-held shower head with hose and chrome-plated slide bar; stainless steel grab bars; 3 each 24", 2 each 18"; molded corner soap dish; folding seat.

Shower curtain optional.

Curtain Size: 72" x 72".

Standard Color: White.

Special order colors available.

Standards:

I.A.P.M.O. File No. 0687
ANSI-Z-124.2 & ANSI-A-117.1
ASTM-E84



FLORESTONE PRODUCTS CO., INC.

2851 Falcon Drive • Madera, CA 93637

T. 559.661.4171 • T. 800.446.8827

F. 559.661.2070 • florestone.com

**Floestone
Model 400 Barrier-Free
Terrazzo-Shower Receptor**



Some Models Conform to
ADA REQUIREMENTS*

**Architect's
Specifications**

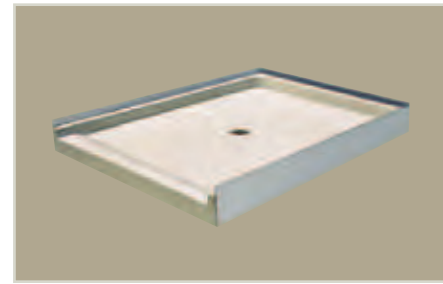
Furnish and install wheelchair accessible Terrazzo Shower Receptor Model 400 as manufactured by Floestone Products Company. Flanges on three sides, cast integral, shall be of galvanized - bonderized steel and shall extend not less than 1" above the shoulders. Shoulders on three sides shall be not less than 2½" inside. Threshold shall be not more than ½" above receptor floor to allow for barrier free entrance. Drain body shall be brass, cast integral, and shall provide for a non-caulked connection not less than one inch deep to a 2" pipe. Removable type stainless steel strainer plate shall be supplied. Receptor shall be manufactured of tan and white marble chips cast in white Portland cement to produce a compressive strength of not less than 3,000 PSI, seven days after casting. Terrazzo surface shall be ground, polished, and the entire unit sealed to resist stains and moisture. Receptors reinforced with 16-gauge wire.

Options

Offset drain.

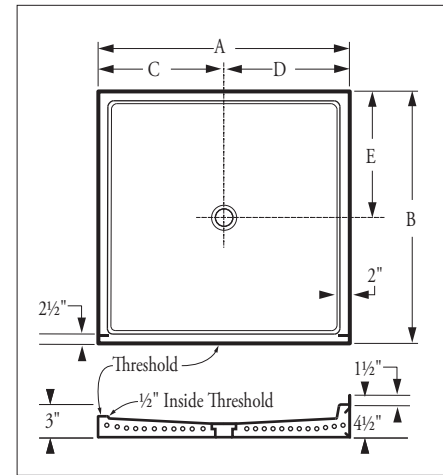
Additional flanges.

(Drawings required)



Model 400

Barrier free, center drain Terrazzo Shower Receptors with reduced threshold height.



A*	B	C	D	E	WT.
36"	36"	18"	18"	18"	315
✓ 40"	38"	20"	20"	19"	370
42"	42"	21"	21"	21"	381
42"	36"	21"	21"	18"	365
48"	36"	24"	24"	18"	445
48"	48"	24"	24"	24"	550
60"	32"	30"	30"	16"	435
60"	36"	30"	30"	18"	500
✓ 63"	33"	31½"	31½"	16½"	500

* Width of threshold (other sizes available upon request)

✓ Conforms to ADA Requirements



FLORESTONE PRODUCTS CO., INC.

2851 Falcon Drive • Madera, CA 93637

T. 559.661.4171 • T. 800.446.8827

F. 559.661.2070 • floestone.com

Dimensions subject to change without notice.
Contact Floestone Products to verify product specifications.

For barrier-free installation, contractor shall provide 1½" minimum recess for curb in sub floor.