



ADA  
COMPLIANT\*

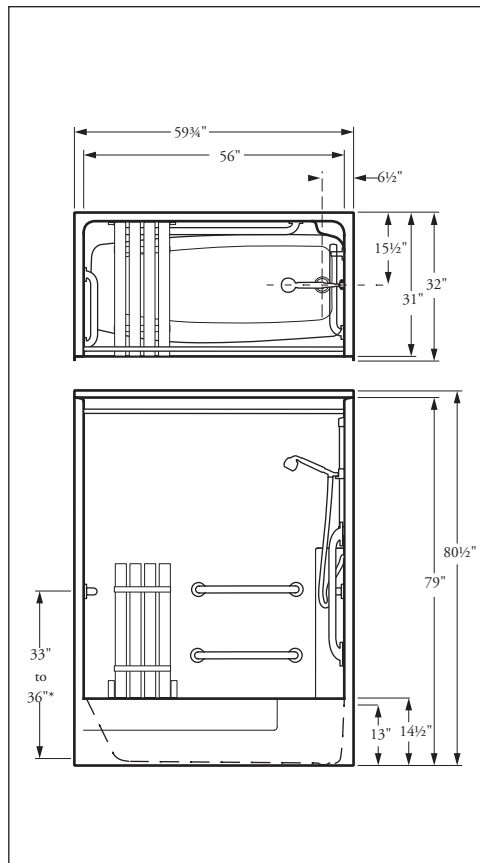
CALIFORNIA  
ADA  
COMPLIANT\*

**Note:** Units sold in CA  
**DO NOT** come with a slide bar.  
Instead a stationary wall hook  
will be installed per CA-ADA  
requirements (2008).



**Tub-Shower  
comes complete  
with accessories:**

- Stainless steel curtain rod
- Symmons® pressure balance mixing valve
- Alsons® hand-held shower head, hose and chrome-plated slide bar
- Stainless steel grab bars: 3 each 24", 1 each 18"
- Molded corner soap dish
- Folding seat



**Specify Right or Left Hand Drain**

**Dimensions may vary ± 1/4" inch.  
Please check unit before installation.**

**Dimensions subject to  
change without notice.**

**Contact Florestone  
Products to verify  
product specifications.**

Symmons® is a Registered Trade Mark of Symmons Industries, Inc.  
Alsons® is a Registered Trade Mark of Alsons Corporation.

**Florestone  
Model 60-31HTS  
Tub/Shower**

59 3/4" x 32" x 80 1/2"  
Weight: 200 lbs.

**Architect's  
Specifications**

Furnish and install one-piece gel-coated fiberglass shower stall Model 60-31HTS designed for barrier-free use as manufactured by Florestone Products Company. Unit to have a flame spread of 25 and a smoke density rating of 400 or less in accordance with ASTM-E84 test method. Basic shower will conform to ANSI-Z-124.2 and the accessorized module to ANSI-A-117.1. Unit to include stainless steel curtain rod; Symmons® pressure balance mixing valve with concealed check stops; Alsons® hand-held shower head with hose and chrome-plated slide bar; stainless steel grab bars; 3 each 24", 2 each 18"; molded corner soap dish; folding seat.

Shower curtain optional.

Curtain Size: 72" x 72".

Standard Color: White.

Special order colors available.

**Standards:**

I.A.P.M.O. File No. 0687  
ANSI-Z-124.2 & ANSI-A-117.1  
ASTM-E84 • CA-TITLE-24



**FLORESTONE PRODUCTS CO., INC.**

2851 Falcon Drive • Madera, CA 93637

T. 559.661.4171 • T. 800.446.8827

F. 559.661.2070 • florestone.com