

## Florestone Model 40-62H Tile Back Barrier-Free Shower

O.D. = 62" x 39" x 78"

I.D. = 60" x 37" x 75"

Weight: 310 lbs.

### Architect's Specifications

Furnish and install one-piece gel-coated fiberglass shower stall Model 40-62H TB designed for barrier-free use as manufactured by Florestone Products Company. Unit to have a flame spread of 25 and a smoke density rating of 400 or less in accordance with ASTM-E84 test method. Basic shower will conform to ANSI-Z-124.2 and the accessorized module to ANSI-A-117.1. Unit to include stainless steel curtain rod; Symmons® pressure balance mixing valve with concealed check stops; Alsons® hand-held shower head with hose and mounting bracket; stainless steel corner grab bar; stainless steel recessed soap dish; white naugahyde folding wheelchair transfer seat (specify right or left hand).

Supplied with 2" brass drain.

Shower curtain optional.

Curtain Size: 72" x 72".

Standard Color: White.

Special order colors available.

### Standards:

I.A.P.M.O. File No. 0687  
ANSI-Z-124.2 & ANSI-A-117.1  
ASTM-E84 • CA-TITLE-24

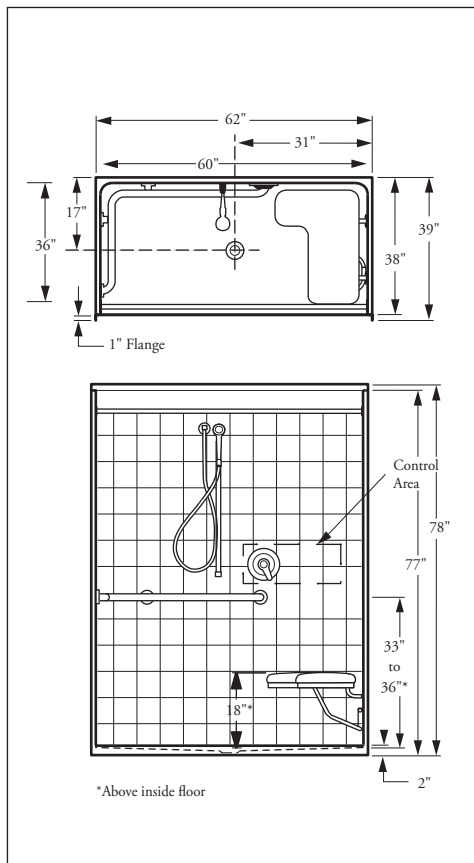


FLORESTONE PRODUCTS CO., INC.

2851 Falcon Drive • Madera, CA 93637

T. 559.661.4171 • T. 800.446.8827

F. 559.661.2070 • florestone.com



### Specify Right or Left Hand Seat

Dimensions may vary  $\pm \frac{1}{4}$ " inch.  
Please check unit before installation.

For barrier-free installation, contractor shall provide  $1\frac{3}{4}$ " minimum recess for curb in sub floor.

ADA compliance when accessories installed by manufacturer.  
**Note: Exterior floor drain for water run-off recommended.**  
Symmons® is a Registered Trade Mark of Symmons Industries, Inc.  
Alsons® is a Registered Trade Mark of Alsons Corporation.



ADA  
COMPLIANT\*

CALIFORNIA

ADA  
COMPLIANT\*

**Note:** Units sold in CA

**DO NOT** come with a slide bar.

Instead a stationary wall hook

will be installed per CA-ADA

requirements (2008).

### Shower comes complete with accessories:

- Stainless steel curtain rod
- Symmons® pressure balance mixing valve
- Alsons® hand-held shower head, hose and chrome-plated slide bar
- Stainless steel wrap-around grab bar
- Stainless steel recessed soap dish
- White naugahyde folding wheelchair transfer seat (specify right or left; hand)
- **Optional:** Phenolic folding wheelchair transfer seat (specify right or left hand)

Dimensions subject to  
change without notice.

Contact Florestone  
Products to verify  
product specifications.