

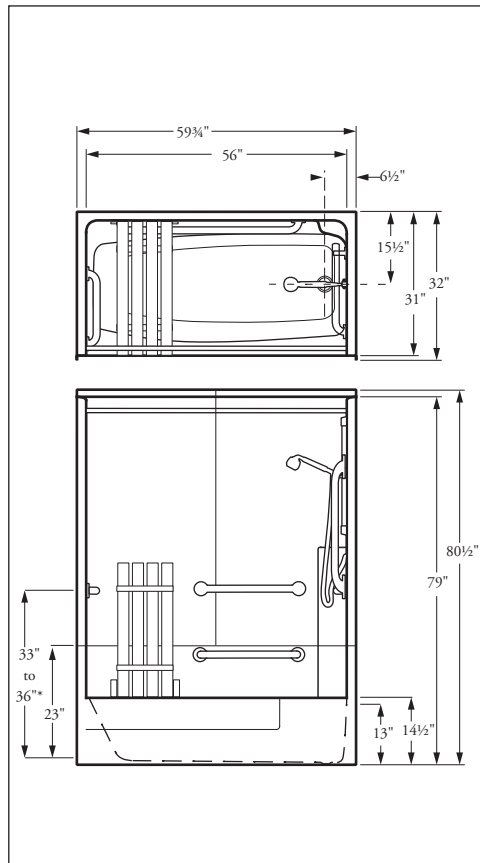


ADA  
COMPLIANT\*

CALIFORNIA  
ADA  
COMPLIANT\*

**Note:** Units sold in CA

**DO NOT** come with a slide bar.  
Instead a stationary wall hook  
will be installed per CA-ADA  
requirements (2008).



**Specify Right or Left Hand Seat**

**Dimensions may vary  $\pm$  1/4" inch.  
Please check unit before installation.**

Dimensions subject to  
change without notice.

Contact Florestone  
Products to verify  
product specifications.

Symmons® is a Registered Trade Mark of Symmons Industries, Inc.  
Moen® is a Registered Trade Mark of Moen Corporation.

## Florestone Model 3PC-60-31HTS Tub/Shower

59<sup>3</sup>/<sub>4</sub>" x 32" x 80<sup>1</sup>/<sub>2</sub>"

Weight: 200 lbs.

### Architect's Specifications

Furnish and install one-piece gel-coated fiberglass shower stall Model 3PC-60-31HTS designed for barrier-free use as manufactured by Florestone Products Company. Basic shower will conform to ANSI-Z-124.2. Unit to include stainless steel curtain rod; Symmons® pressure balance mixing valve with concealed check stops; Moen® hand-held shower head with hose and chrome-plated slide bar; stainless steel grab bars; 3 each 24", 2 each 18"; molded corner soap dish; folding seat.

Shower curtain optional.

Curtain Size: 72" x 72".

Standard Color: White.

Special order colors available.

### Standards:

I.A.P.M.O. File No. 0687  
ANSI-Z-124.2



 **FLORESTONE**  
*A Spec Above.™*

**FLORESTONE PRODUCTS CO., INC.**

2851 Falcon Drive • Madera, CA 93637

T. 559.661.4171 • T. 800.446.8827

F. 559.661.2070 • florestone.com